

# LEASE PROPERTIES

SPACE AVAILABLE



## PROPERTY INFORMATION

- ⊙ ± 1,900 sq.ft.
- ⊙ \$12 psf lease rate. Power and water included in lease.
- ⊙ Located in the Northgate Office Park with easy access to University Parkway, Silas Creek Parkway and Hwy 52.
- ⊙ Convenient parking at front entrance with covered side walks. Main Level, one story building.
- ⊙ Private bathrooms and HVAC.



[Leaseproperties.com](http://Leaseproperties.com)

David Southern  
336-413-0594

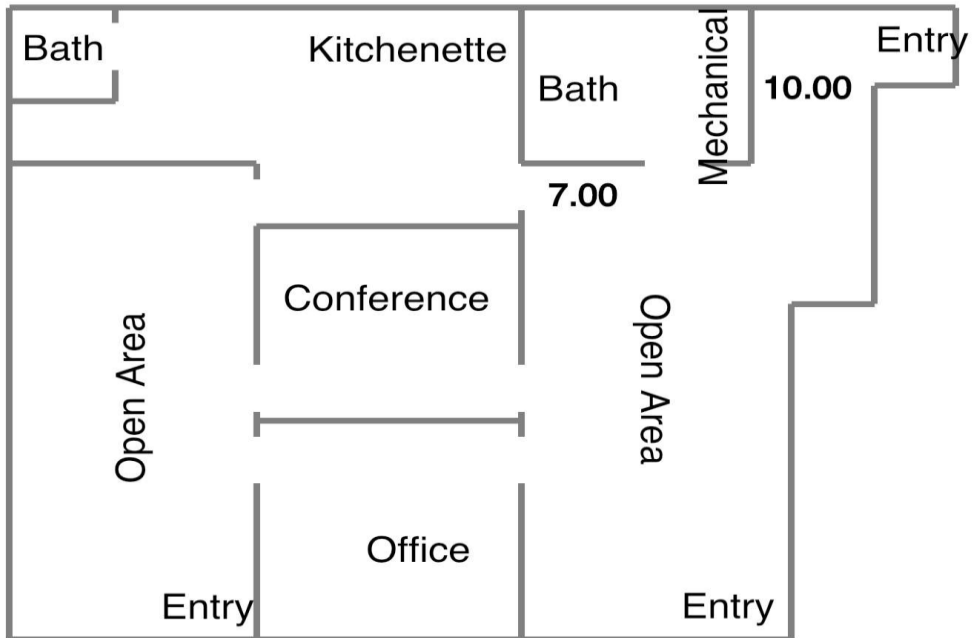


## PROPERTY DETAILS

<b>County</b>	Forsyth	<b>Year Built</b>	1983
<b>Location</b>	104 Northgate Park Drive, Winston-Salem		
<b>Space</b>	1,900 sq. ft. available   Additional 600 sq. ft. could be added.		
<b>Utilities</b>	Water, Power (included in rent)		
<b>Parking</b>	Curb side, covered walkway parking		
<b>Comments</b>	Located in a 5-building office park just off North Point Blvd. This unit has several entrances, 2 private bathrooms. All main Level space with window offices, a conference room and break area.		



## PROPERTY RENDERINGS





# LEASE PROPERTIES

## PROPERTY DETAILS

