

LEASE PROPERTIES

SPACE AVAILABLE



PROPERTY INFORMATION

- Ⓞ ± 5,600 SF total (can be divided (1,600sf and 4,000sf))
- Ⓞ \$ 12.00-\$14.00/ sq.ft with power and water included
- Ⓞ Off Healy Drive behind Flow Chevrolet w/ easy access to both I-40's, Silas Creek Parkway & Stratford Rd
- Ⓞ Convenient, curb side parking with a 70 space lot
- Ⓞ Two 6' doors on front that allows main level loading access for users with storage or distribution needs
- Ⓞ Recent exterior updates
- Ⓞ Broker Protected

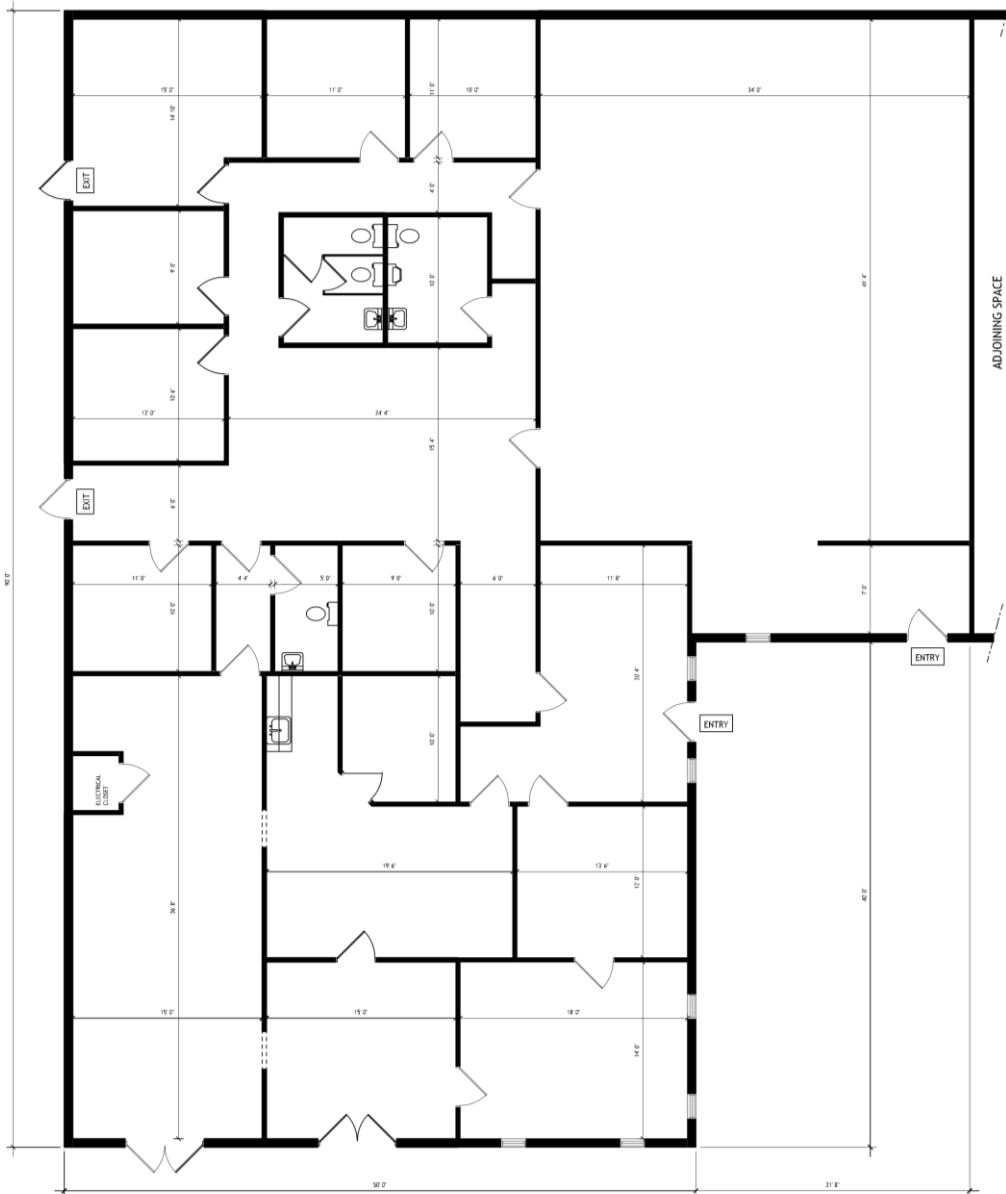


PROPERTY DETAILS

County	Forsyth	Year Built	1983
Location	<u>1411 Plaza West Road Winston-Salem, NC 27103</u>		
Space	5,600 available sq. ft. 10,000 total building sq. ft. One-story structure		
Utilities	Power Water (included in rent)		
Parking	70 parking space lot		
Comments	Convenient to both I-40 and Business I-40, Silas Creek Parkway and Stratford Road. Curb parking with a partially covered sidewalk for easy client access. Space can be divided (1,600sf to 5,600sf).		



PROPERTY RENDERINGS





LEASE PROPERTIES

PROPERTY DETAILS

